

29 January, 2023

Lunch at Springs Hotel, Waubra

Riders at starting point:

Rob T - Kawasaki Z900
Dave W & Kezza - Suzuki XV650
Ted & Janet K - BMW (for short while, then ute daily)
Peter P - car daily
Mick H - Honda CBX750
Mark R - Kawasaki ZZR250
Alan S - Honda CBR1000F

Met at Talbot:

Bohdan & Mandy K - Honda CBX750

Plus Guests:

Lesley H - Suzuki DR650 & Martyn B - BMW Funduro,
Allan H - car daily

Met at the Springs Hotel:

David & Trudi C - car daily

Rob T had heard that the Springs Hotel at Waubra had recently reopened after a long time closed. We decided a short run with lunch booked at the pub seemed to be a good idea.

Some of the riders set off from Starbucks DTC, and we had arranged to meet up with some more participants at Talbot, with David and Trudi meeting us at the pub.

Unfortunately, Ted's BMW developed a problem with the outrigger wheels and he and Janet had to make a dash for home. Unwilling to give up on a day's outing, they met us at the pub in their ute.

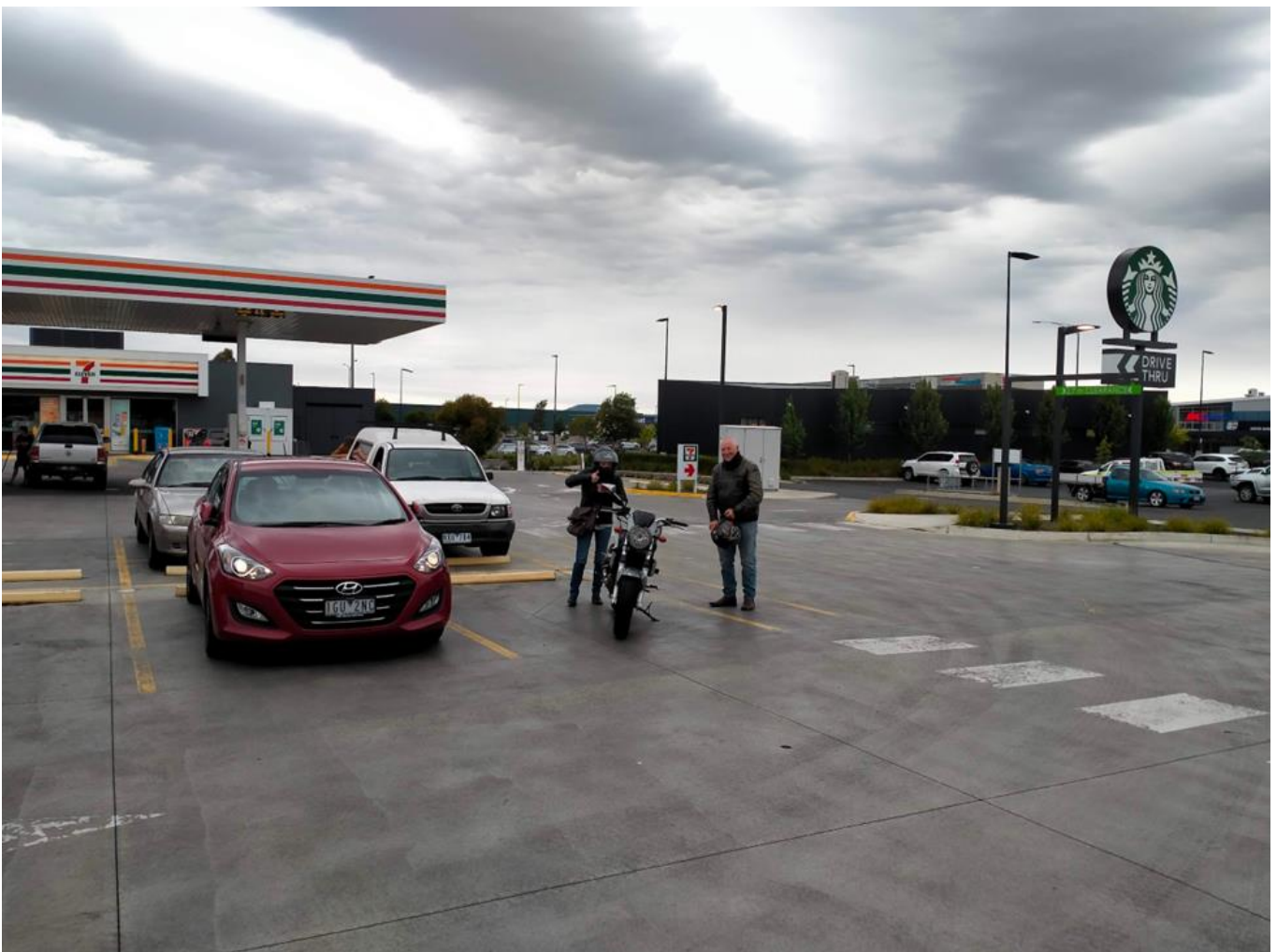
The rest of the starting group proceeded to Talbot and met up with Bohdan, Mandy, Lesley, Martyn and Allan. From there it was a short but very scenic ride to Waubra.

We were quickly seated and orders were taken. The meals were very good and a pleasant time was had by all.

Thanks to Rob T for suggesting the ride destination and to all who came along.



This event was a bit of a departure from the normal Motorbike Only Rides as we generally aim to keep them more informal, making the organisation of the event much less time consuming. As well, we don't normally invite cars along, but we made an exception this time as it was our first outing after Christmas, (January's Combined Event was a Breakfast Only because of the high temperatures on the day) and there were quite a few people who hadn't been able to attend any of our events during the holiday season and were keen to catch up and go on a run.















Motorcycle Only Rides

Last Sunday of Every Month



Departure Point:

7-Eleven/Starbucks Carpark

Delacombe Town Centre, 315 Glenelg Highway, Delacombe

Arrive 9:30 am for a coffee and a chat

Ride will depart when everyone is ready to leave

Destinations and Details will be posted prior to the event, if known,

If not, we will decide on the day

All rides are Weather Permitting - Guests/Friends Always Welcome

Contact Alan Stork

Mobile: 0401 995 061

Email: classicridesdrivesclub@gmail.com

Web: www.classicridesdrivesclub.org

"Calendar" page RSVP Form

CRD Code of Conduct

To ensure that all members and visitors feel safe and are able to enjoy their time with us, we ask that anyone participating in any event conducted by Classic Rides & Drives Club Inc. follow this Code of Conduct:

- Obey all laws at all times, including COVID, road laws and Club Permit Scheme rules
- Any vehicle participating in a club event should be safe for road use
- Participants should ride/drive within the limits of their capabilities, weather conditions, etc.
- Be respectful to all participants and the public
- Never put anyone or anything at risk by behaving in an unsafe or reckless manner
- Never behave in a manner that would be deemed to bring disrepute to the club

Guidelines for Participating in a CRD Club Run

If the participating numbers are large (more than 10 vehicles), the run will be conducted with a Leader and a Back Marker. These two participants will have mobile phones and each other's phone number to enable contact in case of any problems or emergencies.

Slower moving vehicles can cause the dynamics of a run to fail. If for any reason you do not wish to, or your vehicle is not capable of travelling at a maximum speed of 100 kph, tell the Leader before departing. We are happy to accommodate by splitting the run into various groups, each with a Leader and Back Marker. The slower group will always leave last, and the first group (usually bikes only, followed by cars) will always wait for them when re-grouping.

If you would rather travel at your own pace, or take your own route, and then meet up with the group at the final destination, or some other point along the way, that's fine. Just make sure the Leader and Back Marker know before the group leaves the departure point

Remember: You are participating in a fun group event, NOT a race

It is a delicate operation to keep a moving group together, especially when traffic is heavy. Everything that can be done, will be done to ensure no one is "lost" on a run, but it is up to each participant to follow these basic guidelines and respect their fellow travellers:

- **NO PARTICIPANT SHOULD EVER OVERTAKE THE RUN LEADER**
- **MOTORCYCLISTS CAN MARK CORNERS ONLY IF THERE ARE NO CARS PARTICIPATING**
- Always arrive at the departure point on time with a **full tank of fuel**. If your vehicle has a limited fuel range, let the Leader know so that they can accommodate your needs
- When travelling in a group, **ALWAYS** keep the participating rider/driver behind you in your **rear-view mirror**. This may mean slowing down, and even stopping if necessary
- If you see that the vehicle immediately behind you **fails to proceed/disappears from sight**, pull over to a safe spot and wait. The rest of the group and Back Marker will eventually catch up and stop as well. This should cause a chain reaction (known as the "Rubber Band" effect) that should bring the Leader to a halt. The Leader will be updated by phone by the Back Marker. The group should proceed again once the situation is under control
- In the event of a **break-down**, or emergency, pull over to a safe place and wait for the Back Marker to arrive. Explain your situation, and that person will do what is required to provide assistance and to notify the Leader - **Please do not pull over unnecessarily. Only the Back Marker is required to stop to assist**
- If you have to **pull out of the run** for any reason and cannot wait until you reach the next re-grouping point, wave the vehicle behind on, and leave a message with the Back Marker to advise you are not proceeding but are not in need of assistance. **Do not overtake the run leader to depart group as this is dangerous and causes confusion**
- If you take a **wrong turn, or miss a corner**, try to re-join the group in a safe manner, or leave a phone message with the Leader or Back Marker. You will have a run sheet, if possible, do your best to reach the destination or the next stopping point. If not possible, please let either the Leader or Back Marker know your situation and if you require assistance
- If you see the **vehicle behind you take a wrong turn, keep going**. If they apply the above guideline, they should be okay. Continue to keep the next participating vehicle in your rear-view mirror
- **Never overtake on the left**, and please show **courtesy when passing** other vehicles

Most Importantly: ENJOY YOURSELF and STAY SAFE

DISCLAIMER:

The Classic Rides & Drives Club Inc will not be liable for any damage, injury or loss caused directly or indirectly by anyone participating in a CRD event/activity, whether to the participant, or to any other party. Participants will fully indemnify and hold the club harmless in connection with all claims arising from such damage, injury or loss.

Child Protection Policy: Any child participating in a CRD event will be under supervision of their parent/guardian at all times.

Don't miss out on the fun,
stick this calendar on your
fridge today

2023



January						
S	M	T	W	T	F	S
	1	2	3	4	5	6
7	8	9	10	11	12	13
14	15	16	17	18	19	20
21	22	23	24	25	26	27
28	29	30	31			

February						
S	M	T	W	T	F	S
				1	2	3
4	5	6	7	8	9	10
11	12	13	14	15	16	17
18	19	20	21	22	23	24
25	26	27	28			

March						
S	M	T	W	T	F	S
				1	2	3
4	5	6	7	8	9	10
11	12	13	14	15	16	17
18	19	20	21	22	23	24
25	26	27	28	29	30	31

April						
S	M	T	W	T	F	S
						1
2	3	4	5	6	7	8
9	10	11	12	13	14	15
16	17	18	19	20	21	22
23	24	25	26	27	28	29
30						

May						
S	M	T	W	T	F	S
						1
2	3	4	5	6	7	8
9	10	11	12	13	14	15
16	17	18	19	20	21	22
23	24	25	26	27	28	29
30	31					

June						
S	M	T	W	T	F	S
						1
2	3	4	5	6	7	8
9	10	11	12	13	14	15
16	17	18	19	20	21	22
23	24	25	26	27	28	29
30						

Combined Runs for March, April, May & June shifted to the first Sunday of the month due to Long Weekends & Mothers Day

July						
S	M	T	W	T	F	S
						1
2	3	4	5	6	7	8
9	10	11	12	13	14	15
16	17	18	19	20	21	22
23	24	25	26	27	28	29
30	31					

August						
S	M	T	W	T	F	S
						1
2	3	4	5	6	7	8
9	10	11	12	13	14	15
16	17	18	19	20	21	22
23	24	25	26	27	28	29
30	31					

September						
S	M	T	W	T	F	S
						1
2	3	4	5	6	7	8
9	10	11	12	13	14	15
16	17	18	19	20	21	22
23	24	25	26	27	28	29
30						

October						
S	M	T	W	T	F	S
						1
2	3	4	5	6	7	8
9	10	11	12	13	14	15
16	17	18	19	20	21	22
23	24	25	26	27	28	29
30	31					

November						
S	M	T	W	T	F	S
						1
2	3	4	5	6	7	8
9	10	11	12	13	14	15
16	17	18	19	20	21	22
23	24	25	26	27	28	29
30						

December						
S	M	T	W	T	F	S
						1
2	3	4	5	6	7	8
9	10	11	12	13	14	15
16	17	18	19	20	21	22
23	24	25	26	27	28	29
30	31					

www.classicridesdrivesclub.org Contact: Alan Stork 0401 995 061 Email: classicridesdrivesclub@gmail.com

 = Combined Run

 = Motorcycle Only Run